

Lesson 18

Explaining How Images Support Text



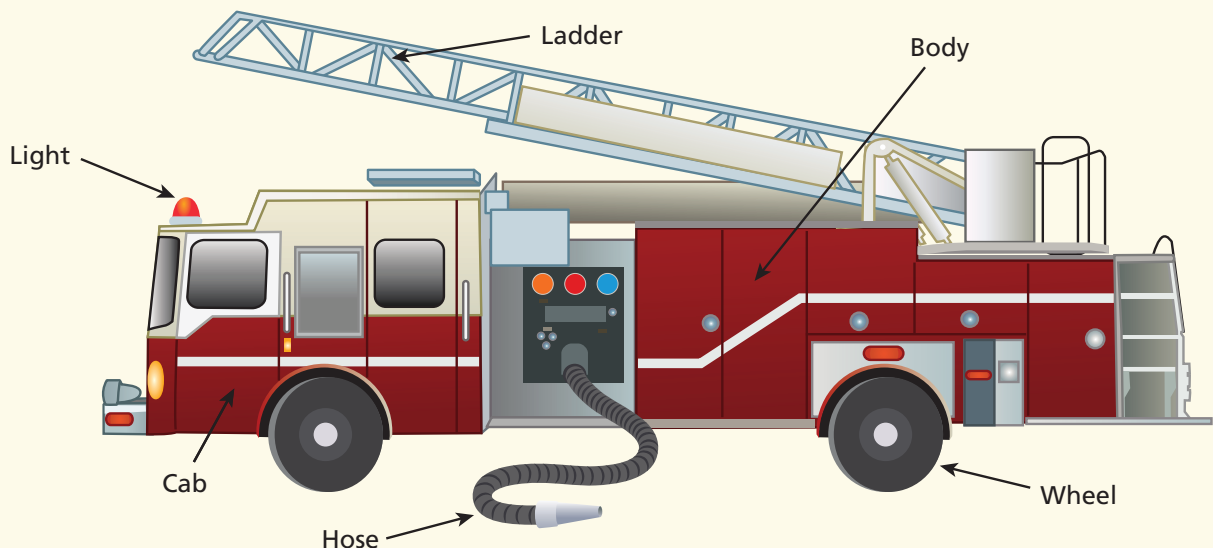
Learning Target

Looking at the pictures that go with a text will help you better understand what you read.

- ▶ **Read** When you read, pictures and other **images** can be as important as words. They can **support**, or help explain, information in the text. For example, **diagrams** are drawings that show the different parts of something. They can also show how something works.

Read the sentences. Then look at the diagram. How do they work together to help you understand the parts of a fire truck?

The driver of a fire truck sits in the cab. A ladder and a hose are connected to the main part of the truck. The hose is long and can stretch far from the truck.



► **Think** Look again at the page about the fire truck. Fill in the chart to tell what you learn from the sentences and the diagram.

What the Text Tells	What the Diagram Shows

► **Talk** The sentences and the diagram of the truck help you understand the parts of the fire truck. Talk with a partner about how the diagram makes the sentences easier to understand.



Academic Talk

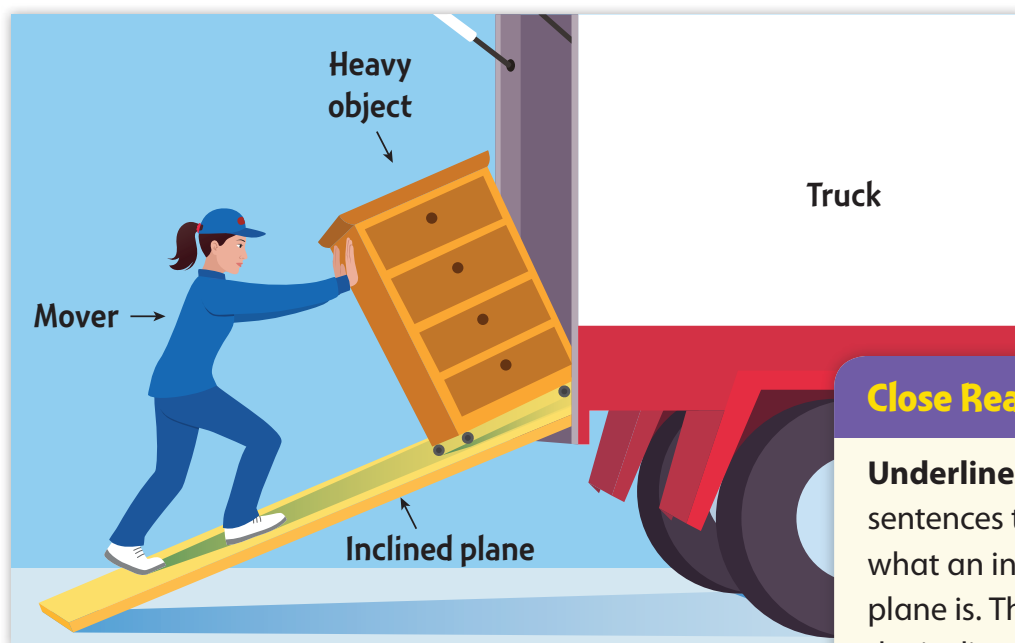
Use these words to talk about the text.

- **support**
- **diagrams**
- **images**

The Inclined Plane

by Sandra Brody

- 1 Many years ago, people had a problem. How could they easily move heavy objects without lifting them? The answer to the problem was the inclined plane.
- 2 An inclined plane is a flat surface that creates a ramp. This ramp makes a smooth climb from a lower place to a higher place. Inclined planes let people move heavy objects more easily. They can push the objects instead of lifting them.
- 3 Today, we use inclined planes all the time. Wheelchair ramps are one example. Loading ramps for moving trucks are another. Boat ramps are another.



Close Reader Habits

Underline the two sentences that tell you what an inclined plane is. Then **circle** the inclined plane on the diagram.

Explore

How does the diagram of an inclined plane help you better understand the information in the article?



As I reread the text, I will look at the diagram to help me understand.

Think

- 1** Read the article again. Fill in the chart to show how the text and the diagram work together.

What the Text Tells	What the Diagram Shows

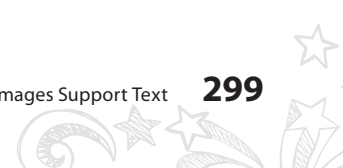
Talk

- 2** Reread paragraph 3. What are inclined planes used for? What other reasons can you think of for using an inclined plane?

Write

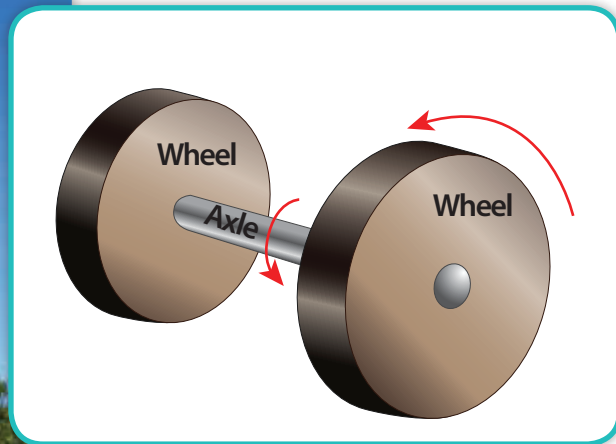
- 3 Short Response** Look again at the diagram. How does it help you understand how an inclined plane works? Write your answer in the space on page 302.

HINT How does the diagram show what you read about in paragraph 2?



Wheels and Axles

by Ed Green



- 1 A simple machine has few or no moving parts. One kind of simple machine is a wheel and axle. A wheel and axle can help move people or objects from one place to another.
- 2 Wheels and axles are all around you. Cars and bicycles have wheels and axles. A skateboard has them. Even a Ferris wheel is really just a big wheel and axle!
- 3 This simple machine has a large wheel. It also has a rod, called an axle. The axle goes through the center of the wheel. When the axle is turned, the wheel also turns.

Close Reader Habits

How does a wheel and axle work? **Put a box around** the paragraph that tells how it works. **Circle** labels on the diagram that show the two parts of this machine.



After I reread the text, I'll look at the diagram. It will tell me more about what I've read.

Think

- 1 Which sentence from the passage does the diagram help to explain?
 - A "A wheel and axle can help move people or objects from one place to another."
 - B "Wheels and axles are all around you."
 - C "Cars and bicycles have wheels and axles."
 - D "The axle goes through the center of the wheel."

- 2 How does the diagram add to what the author tells us?
 - A It shows that the machine can have two or more axles.
 - B It shows that the axle must be long and heavy.
 - C It shows that wheels and axles turn in the same direction.
 - D It shows that many things around us have wheels and axles.

Talk

- 3 The article says that wheels and axles can help move people or objects from place to place. What does this mean?

HINT Look at the article for examples of things that use wheels and axles.

Write

- 4 **Short Response** How does this article help you understand how wheels and axles work? Use one detail from the diagram and one detail from the text to support your answer. Write your answer in the space on page 303.

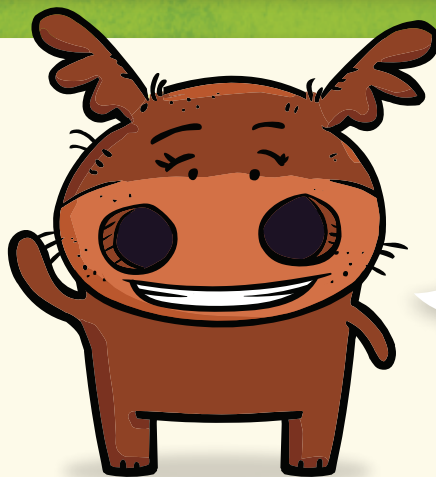


Write Use the space below to write your answer to the question on page 299.

The Inclined Plane

3 Short Response Look again at the diagram. How does it help you understand how an inclined plane works?

HINT How does the diagram show what you read about in paragraph 2?



Don't forget to check your writing.



Write Use the space below to write your answer to the question on page 301.

Wheels and Axles

- 4 Short Response** How does this article help you understand how wheels and axles work? Use one detail from the diagram and one detail from the text to support your answer.

Check Your Writing

- Did you read the question carefully?
- Can you say the question in your own words?
- Did you use proof from the text in your answer?
- Are your ideas in a good, clear order?
- Did you answer in full sentences?
- Did you check your spelling, capital letters, and periods?

